

HomeCharger

Overview

- Charge all Mode-3 vehicles
- Single output from 3,7 kVA to 22 kVA
- Socket or fixed cable, fits all vehicles
- Safe and intuitive to use
- Status color LED
- Intended for in and outdoor installations
- Optional power meter available
- Optional RFID for access control



User-Friendly



Low-Cost



Available Outputs



Local Network



Plug-in charging systems

Type 1 plug



Type 2 plug



Type 2 Socket



Product description

The **Homecharger** is a safe and reliable individual charging point to charge your electric vehicle. With a compact, space-saving, modern and attractive design, with possibility of selecting 8 different colors. It is the perfect EV Charging station for your home, company, fleet or parking facilities.

Available in 4 different power configurations, up to 22 kVA, and possibility of choice of fixed cable, for user comfort. With plug (Type-1 or Type-2) or socket (Type-2), provides the market ultimate flexibility for this type of equipments.

Easy to use, the **Homecharger** uses simple multicolored LEDs to present its operation status at each moment.

As an option you will find a few add on solutions for the best application in your home, apartment, condominium or company. With possibility to have Access Control (RFID, key switch) to secure limited access to the charger. Energy metering is also an option in areas of common energy supply with the function of energy consumption reporting.

Main features

- Low cost
- Fits all cars
- Easy and safe to use
- Simple Plug & Play installation
- Mode 3 charging
- Small and compact
- Single or three phase
- Aluminum enclosure
- 8 colors available
- Customizable
- Indoor/Outdoor (IP54)

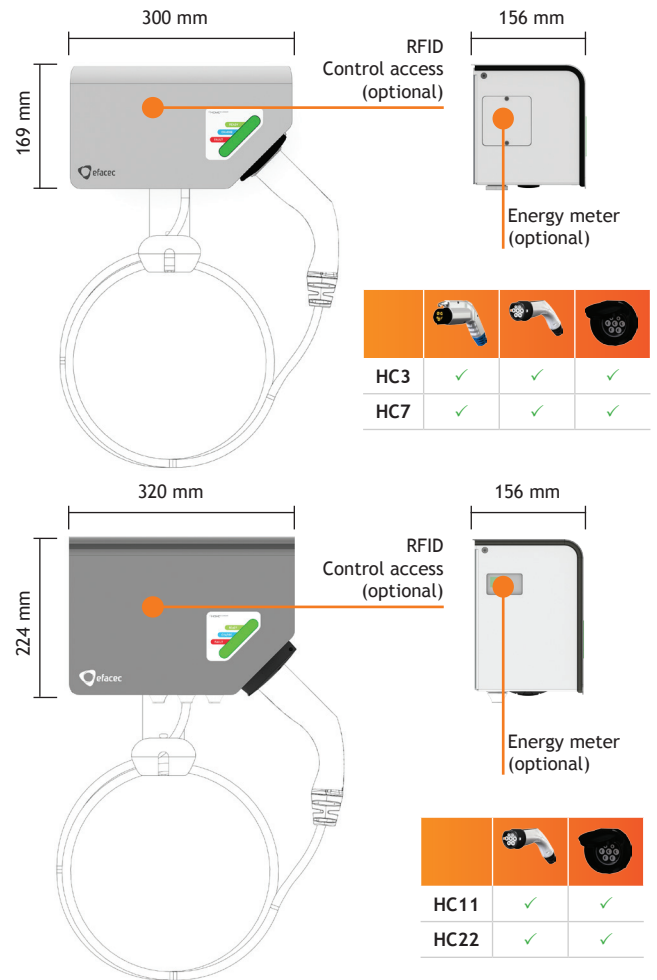
Technical Information

Technical data	CE			
Equip. Name	HC3	HC7	HC11	HC22
Nominal Input				
Phases / lines	1-ph + neutral + PE		3-ph + neutral + PE	
Voltage	230 Vac ± 10 %		400 Vac ± 10 %	
Frequency	50 Hz			
Input current	16 A	32 A	16 A	32 A
Input power	3,7kVA	7,4kVA	11kVA	22kVA
Nominal Output				
Voltage	230 Vac ± 10 %		400 Vac ± 10 %	
Current	16 A	32 A	16 A	32 A
Nominal power	3,7kVA	7,4 kVA	11 kVA	22kVA
Over current	20A	40A	20 A	40 A
RCD	30mA (Type A)		30 mA (Type B)	
General Specifications				
Equipment	Single AC output equipment			
Mounting	Wall mount or pole			
Communication with EV	Pilot signal according to IEC61851			
Plug or socket	J1772 plug (with 5 m cable) IEC62196 Type-2 plug (with 5 m cable) IEC62196 Type-2 socket			
Human machine Interface	By default Not possible. Status by LED signal Mifare classic for access control only For local energy measurement Not possible. Optionally as slave of a Efacec EV-Public Charger			
Place of installation	Indoor/Outdoor			
Altitude	Up to 1000 m			
Protection degree	IP54 IK10			
Operating temperature	-25 to +50 °C			
Storage temperature	-40 to +60 °C			
Humidity	5% to 95%			
Dimensions (W x D x H)	300 x 156 x 169		320 x 156 x 224	
Weight	4 to 7kg			

Local Network



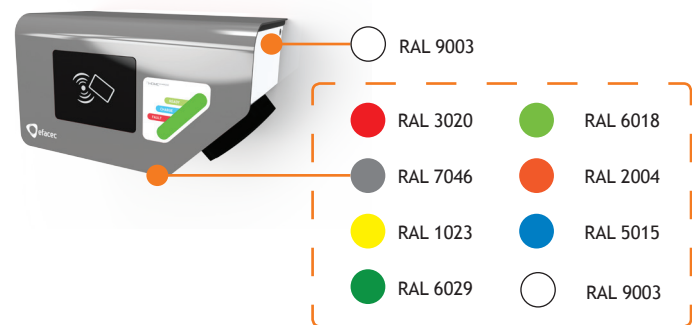
Configurations



Applications

- Private Houses
- Company Parking's
- Car-Share, Taxi and Rent-a-Car fleets
- Service, Commercial and Distribution fleets
- EV Dealers and Service workshops
- As Slaves in a Public Charging Infrastructures

Choose your color



Main Office:
 Rua Eng. Frederico Ulrich | Apartado 3078 | 4471-907 Moreira da Maia | Portugal | Phone: +351 229 402 000 | Fax: +351 229 403 209 | e-mail: efapower@efacec.com | web: www.efacec.com
 Office:
 2755 Northwoods Parkway | Norcross, Georgia 30071 USA | Phone: 770 446 8854 | Fax: 770 446 8920 | e-mail: usag@efacecusa.com

